

S

H

S

THE SEQUOYAH SMOKE SIGNAL

Musical Arts Booster Club Newsletter / www.bandofchiefs.org

August, 2011

Donna's Notes

WOW! Or, maybe more appropriately, WHEW! Band camp has come and gone, and we are well on our way to another great year. The kids worked hard, they learned a lot, and we tried to have a little bit of fun along the way, too. Special thanks go out to Mr. Eubanks and his staff who worked tirelessly throughout the week!! We cannot say THANK YOU enough to our parents who volunteered – there are simply too many to mention by name!! We could not have had the great week that we did without so many parents volunteering their supplies, time, or effort. We also had a fun field trip to DCI where we saw a great competition. Hopefully the students were inspired by some of these extraordinary performances.

COMMITTEES

Chaperones & Concession Stand – If you volunteered for one of these, look for your schedules to be posted on the website in the near future.

Fundraising – Our summer car washes raised approx. \$1500 for our transportation budget. Thanks to Brusters Ice Cream and Johnny's Pizza at Hickory Flat for their donation of space and water - if you visit them, be sure to mention our thanks for their support. Look for our first fundraising opportunity to be introduced soon.

Spirit Wear – Will be sold at every home football game behind our band – stop by and see Pam Hayes for all your Band of Chiefs gear.

Uniforms – we have band t-shirts for sale (just like the kids) for \$14.00. Also, we have some limited sizes left over from last year's show being sold at the low, low price of \$5.00. Please contact Sue McIntyre at sue.mac@att.net.

****Please see the back of this newsletter for special advertising.****

DATES TO REMEMBER

- Aug 12** – Cherokee at SHS (scrimmage)
No band; concessions & visitor gate only
- Aug 16** – 7:00 – MABC Meeting
- Aug 22** – Chicago Trip Payment #2 Due
- Aug 26** – 7:30 - SHS at Creekview High School
Report time to be announced
- Aug. 27** – Show Finishing Camp at SHS
9:00 – 5:00
- Sept. 2** – 7:30 - Johns Creek at SHS
Report time to be announced
- Sept. 9** – 7:30 - NW Whitfield at SHS – Homecoming
Report time to be announced

Please check the website often for schedule updates and changes: www.bandofchiefs.org

The officers of the SHSMABC are listed below and are available to answer any questions you may have.

- President:** Donna Gagne 770-516-1840
gagnfamily@sprynet.com
- Vice Pres.:** Ellen Cardin 770-704-8688
ellencardin@gmail.com
- Secretary:** Pam Hayes 678-493-0058
pam.hayes@hogfarmcircle.com
- Co-Treasurer:** Theresa Andretta 404-425-8859
tga1210@bellsouth.net
- Co-Treasurer:** Sue McIntyre 770-841-1347
sue.mac@att.net
- Past Pres.:** Gerald Gardner 404-374-9781
cinqw@comcast.net



www.stonemountainaccess.com | Toll Free 877.544.9015

JULY 2011

Commercial & Industrial Scaffolding

Suspended Systems
 Frame & Brace Shoring
 Temporary Fencing

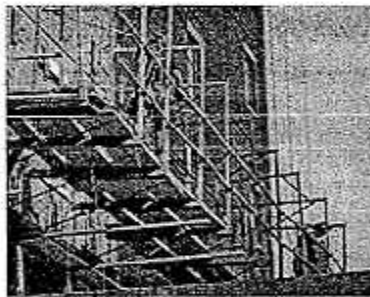
Stone Mountain Access provides you with the scaffolding and shoring you need to complete your project safely and efficiently.



- New construction
- Building renovation
- Building and chimney demolition
- Building maintenance and waterproofing
- On-site rigging
- Erection and Dismantle services
- Heavy duty mason suspended scaffold (EZ Scale)
- Engineering services
- Temporary stair units
- Fixed sidewalk canopies
- Rolling sidewalk canopies
- Temporary Fencing

> SUSPENDED ACCESS SAFETY TRAINING

Stone Mountain Access equips your staff with the knowledge they need to safely handle and operate Stone Mountain Access equipment. We offer Safety Training Programs (Classroom, On-Site, Operators, Rigging Trouble-Shooting, Identifying Job Site Hazards and Hands-on) and Consultations. We also offer city of Chicago certified suspended access training classes, OSHA 10 hour, OSHA 30 hour, and confined space training.



Please call for our current training class schedule or visit www.stonemountainaccess.com to receive more information.

| | | | | |
|---|---|--|---|--|
| 4029 May St. Hillside, IL 60162 P 708.544.9010 | 309 Highland Ave. Theresa, WI 53091 P 630.835.9010 | 200 Mendel Dr., S.W. Atlanta, GA 30336 P 404.691.1944 | 10194-H Lorraine Rd. Gulfport, MS 39503 P 228.896.5383 | 4600 McCoy Dr. Pensacola, FL 32503 P 850.444.9380 |
|---|---|--|---|--|

This Company donated our scaffolding to us - THANK YOU!